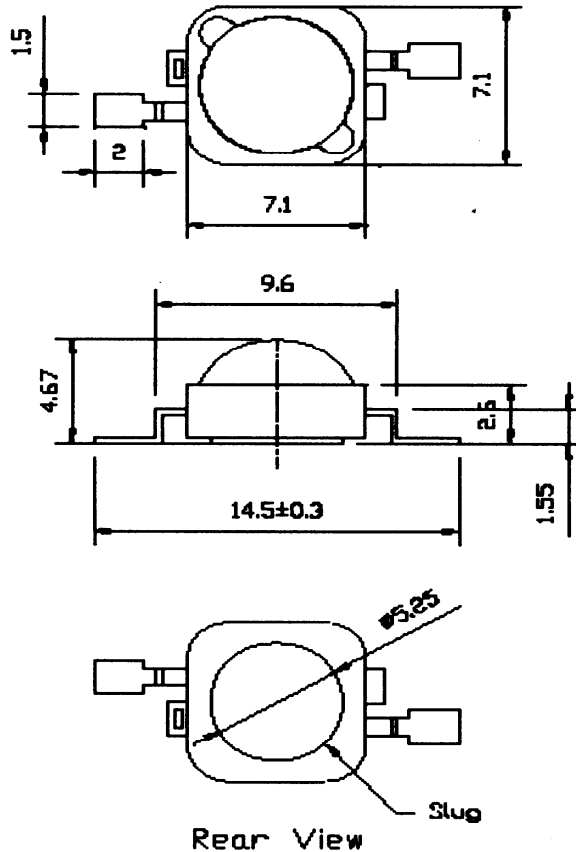


Technical Data Sheet – 1W High Power White LED

★ Package Dimensions



NOTE:

1. All dimensions are in millimeter.
2. All dimensions are without tolerance are for reference only.

★ Selection Guide

Part NO.	Chip		Lens Color	Viewing Angle 2θ 1/2(deg)
	Material	Emitted Color		
HP-350W-PW-1EN	GaN	Pure White	Water clear	130
HP-350W-WW-1EN		Warm white		

Part No:HP-350W-PW-1EN

★Absolute Maximum Ratings

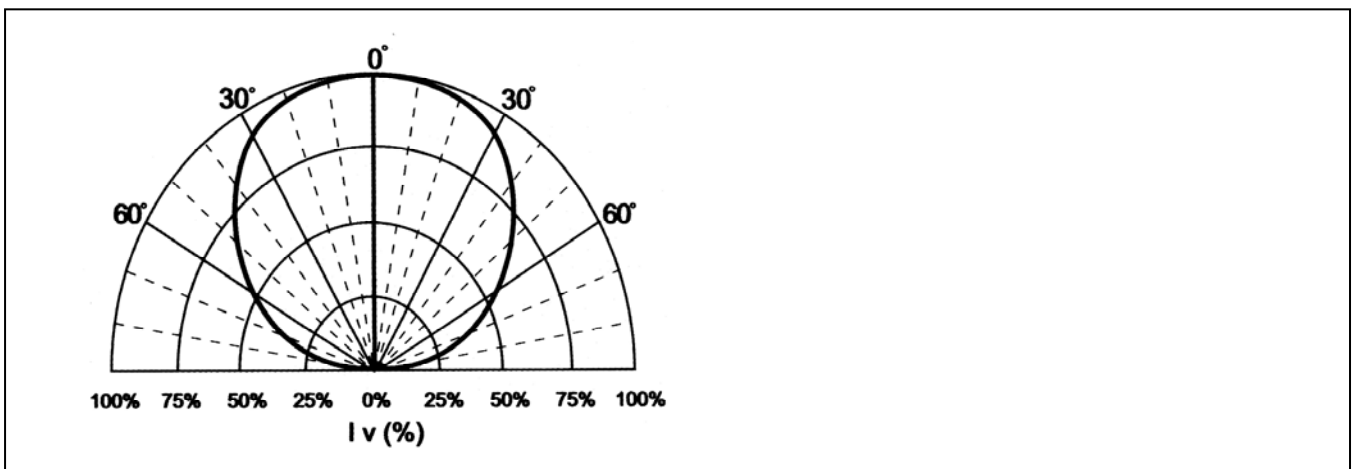
(Ta=25°C)

Parameter	Symbol	MAX. Rating	Unit
Reverse Current (VR=5V)	IR	10	uA
DC Forward Current	IF	350	mA
Peak Forward current	Ipeak	500	mA
LED Junction Temperature	TJ	120	°C
Operating Temperature	Topr	-40~+85	°C
Storage Temperature	Tsto	-40~+100	°C
Soldering Temperature MAX. 260°C for 5 sec MAX.			

★Electric-Optical Characteristics

Parameter	Symbol	Test Condition	MIN	TYP	MAX	Unit
Forward Voltage	VF	IF=350mA		3.3	3.8	V
Reverse Voltage	VR	IR=10uA	5			V
Luminous Flux	IV	IF=350mA	50	90		lm
Color temperature	CCT	IF=350mA		6500	10000	K

★Beam Pattern



Part No:HP-350W-WW-1EN

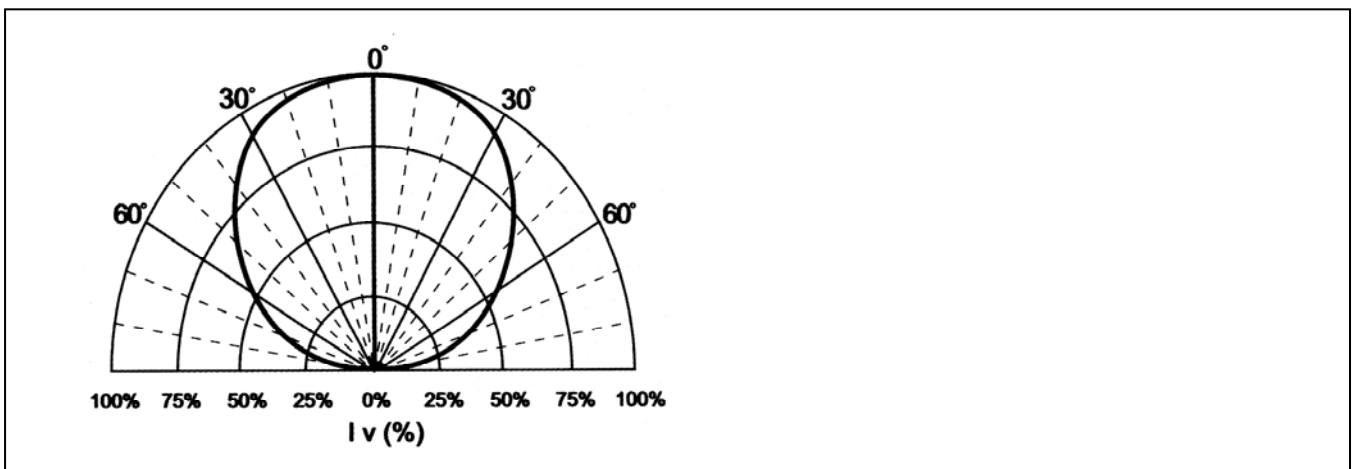
★Absolute Maximum Ratings (Ta=25°C)

Parameter	Symbol	MAX. Rating	Unit
Reverse Current (VR=5V)	IR	10	uA
DC Forward Current	IF	350	mA
Peak Forward current	Ipeak	500	mA
LED Junction Temperature	TJ	120	°C
Operating Temperature	Topr	-40~+85	°C
Storage Temperature	Tsto	-40~+100	°C
Soldering Temperature MAX. 260°C for 5 sec MAX.			

★Electric-Optical Characteristics

Parameter	Symbol	Test Condition	MIN	TYP	MAX	Unit
Forward Voltage	VF	IF=350mA		3.3	3.8	V
Reverse Voltage	VR	IR=10uA	5			V
Luminous Flux	IV	IF=350mA	50	75		lm
Color temperature	CCT	IF=350mA		3300	3800	K

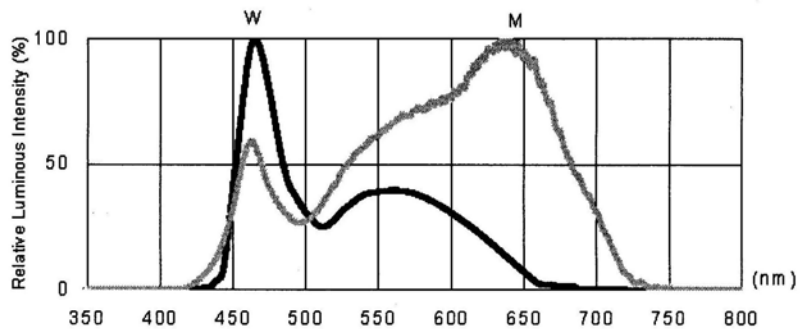
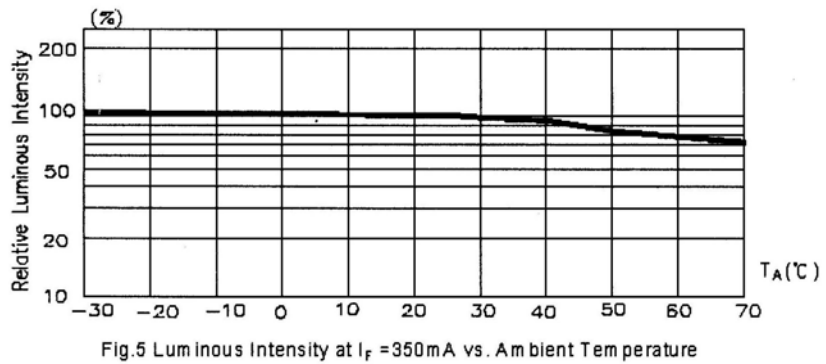
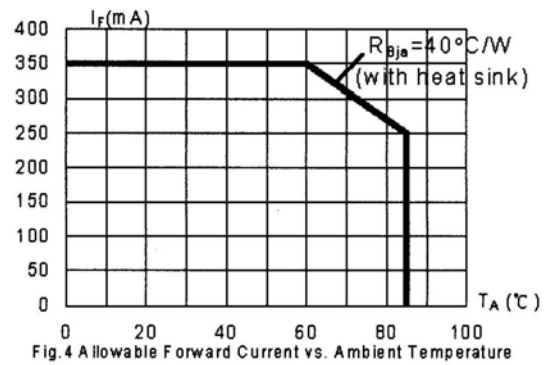
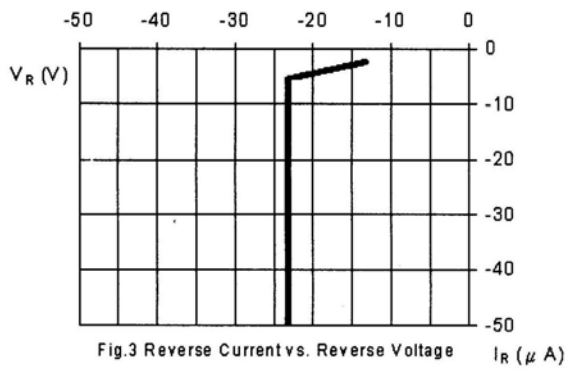
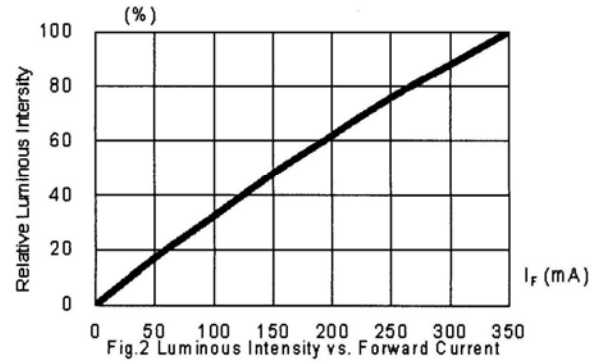
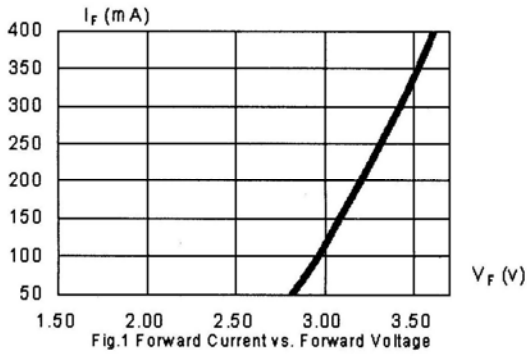
★Beam Pattern



Part No:HP-350W-xW-1EN

★ Typical Electrical / Optical Characteristics Curves

(25°C Ambient Temperature Unless Otherwise Noted)





HIGH POWER LED



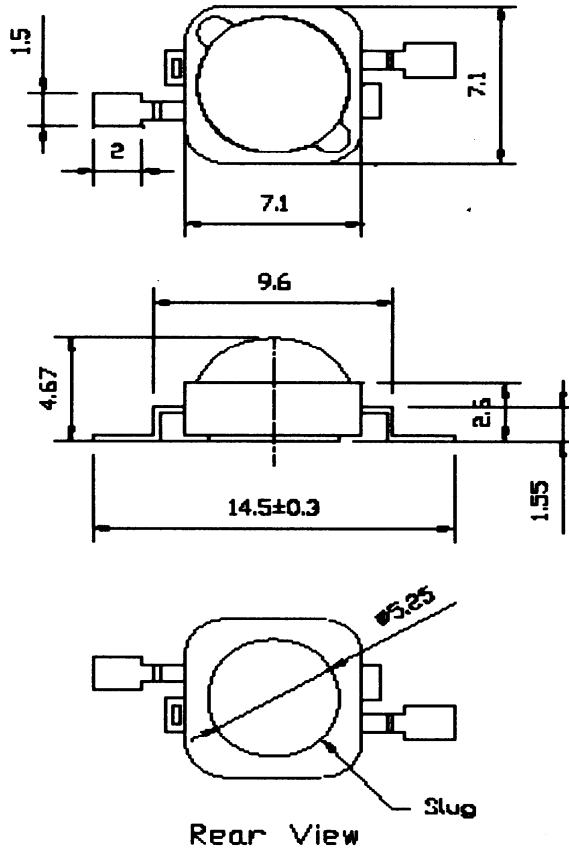
Part No:HP-350W-xW-1EN

★Reliability Test

No	Item	Test Condition	Test Hours/Cycles	Samples Tested	Acc./Rej
1	Room Temperature DC Oper-ating Life	Ta=25°C , I _F = 350 mA	1000 Hrs	10	0/1
2	Thermal Shock	0°C (2min)→ 100°C (2min)	100 Cycles	10	0/1
3	Temperature Cycle	-40°C (30min) →(5min)→+100 °C (30min)	100 Cycles	10	0/1
4	High Temp./ High Humi. Test	85°C /85%RH	500 Hrs	10	0/1
5	High Temperature Storage	Ta=100°C	1000 Hrs	10	0/1
6	Low Temperature Storage	Ta= - 40°C	1000 Hrs	10	0/1
7	Soldering Heat	260°C±5°C	5 Seconds	10	0/1

Technical Data Sheet –3W High Power White LED

★ Package Dimensions



NOTE:

1. All dimensions are in millimeter.
2. All dimensions are without tolerance are for reference only. .

★ Selection Guide

Part NO.	Chip		Lens Color	Viewing Angle 2θ 1/2(deg)
	Material	Emitted Color		
HP-700W-PW-3EN	GaN	Pure White	Water clear	130
HP-700W-WW-3EN		Warm White		

Part No:HP-700W-PW-3EN

★Absolute Maximum Ratings (Ta=25°C)

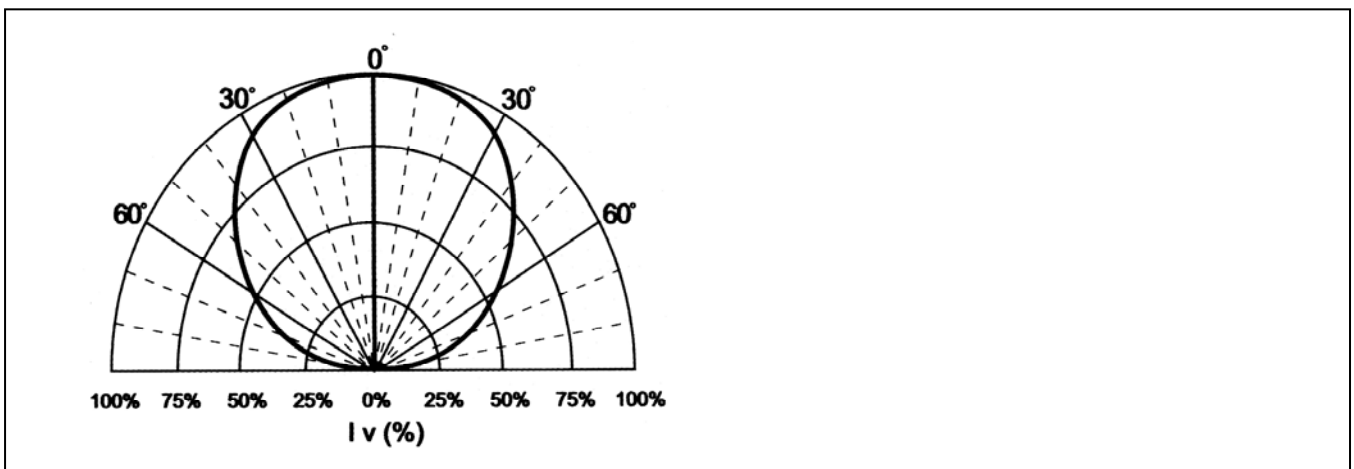
Parameter	Symbol	MAX. Rating	Unit
Reverse Current (VR=5V)	IR	10	uA
DC Forward Current	IF	700	mA
Peak Forward current	Ipeak	1000	mA
LED Junction Temperature	TJ	120	°C
Operating Temperature	Topr	-40~+85	°C
Storage Temperature	Tsto	-40~+100	°C

Soldering Temperature MAX. 260°C for 5 sec MAX.

★Electric-Optical Characteristics

Parameter	Symbol	Test Condition	MIN	TYP	MAX	Unit
Forward Voltage	VF	IF=700mA		3.5	4.0	V
Reverse Voltage	VR	IR=10uA	5			V
Luminous Flux	IV	IF=700mA	80	150		lm
Color temperature	CCT	IF=700mA		6500	10000	K

★Beam Pattern



Part No:HP-700W-WW-3EN

★Absolute Maximum Ratings (Ta=25°C)

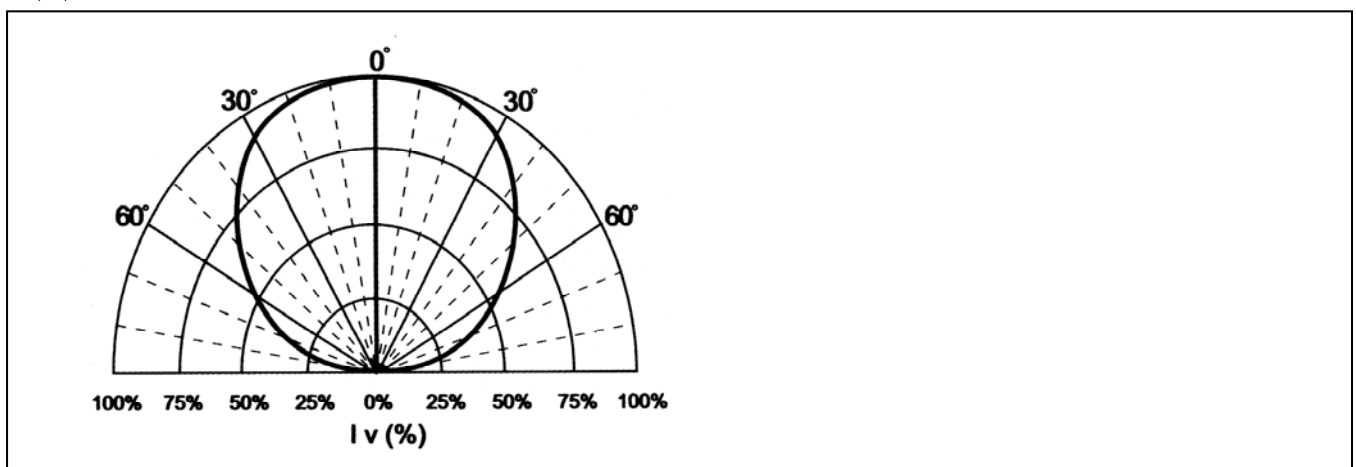
Parameter	Symbol	MAX. Rating	Unit
Reverse Current (VR=5V)	IR	10	uA
DC Forward Current	IF	700	mA
Peak Forward current	Ipeak	1000	mA
LED Junction Temperature	TJ	120	°C
Operating Temperature	Topr	-40~+85	°C
Storage Temperature	Tsto	-40~+100	°C

Soldering Temperature MAX. 260°C for 5 sec MAX.

★Electric-Optical Characteristics

Parameter	Symbol	Test Condition	MIN	TYP	MAX	Unit
Forward Voltage	VF	IF=700mA		3.5	4.0	V
Reverse Voltage	VR	IR=10uA	5			V
Luminous Flux	IV	IF=700mA	50	90		lm
Color temperature	CCT	IF=700mA		3300	3800	K

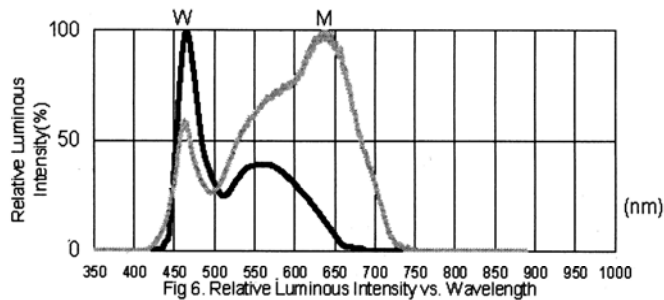
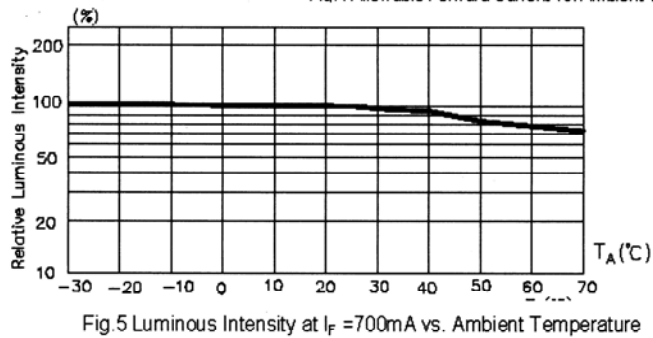
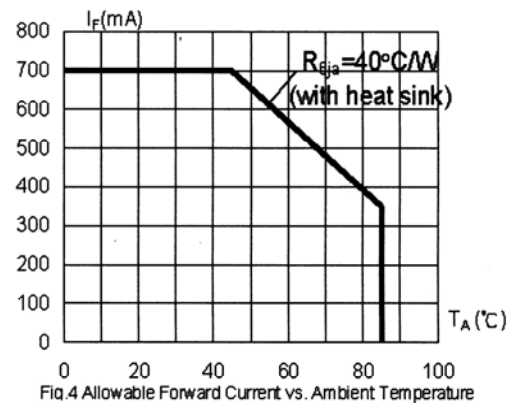
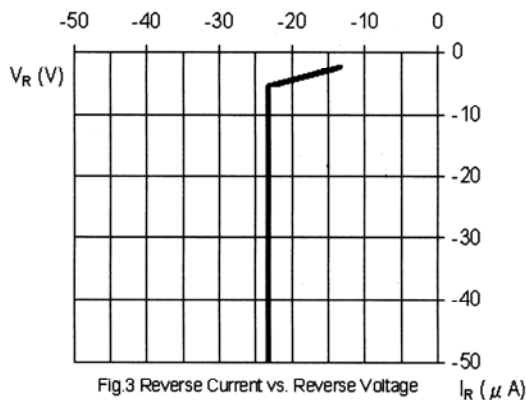
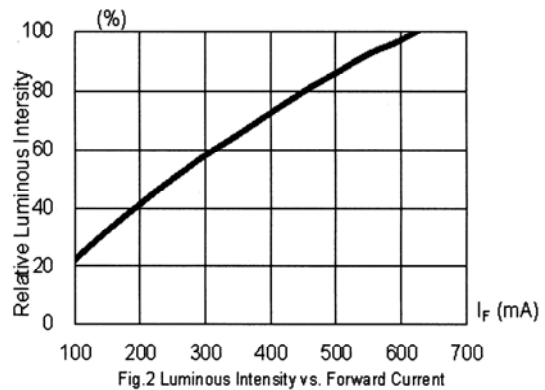
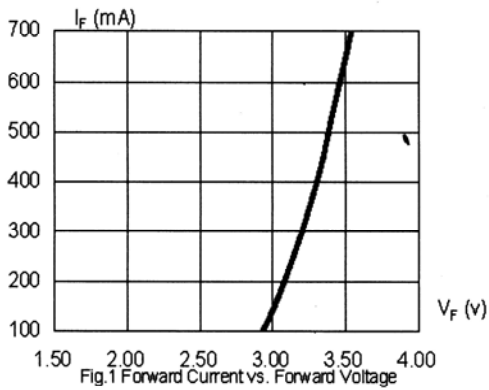
★Beam Pattern



Part No:HP-700W-xW-3EN

★ Typical Electrical / Optical Characteristics Curves

(25°C Ambient Temperature Unless Otherwise Noted)



Part No:HP-700W-xW-3EN**★Reliability Test**

No	Item	Test Condition	Test Hours/Cycles	Samples Tested	Acc./Rej
1	Room Temperature DC Oper-ating Life	Ta=25°C, IF= 700mA	1000 Hrs	10	0/1
2	Thermal Shock	0°C (2min)→ 100°C (2min)	100 Cycles	10	0/1
3	Temperature Cycle	-40°C (30min) →(5min)→+100 °C (30min)	100 Cycles	10	0/1
4	High Temp./ High Humi. Test	85°C/85%RH	500 Hrs	10	0/1
5	High Temperature Storage	Ta=100°C	1000 Hrs	10	0/1
6	Low Temperature Storage	Ta= - 40°C	1000 Hrs	10	0/1
7	Soldering Heat	260°C±5°C	5 Seconds	10	0/1